

# Regional Monitoring Models

Delta Regional Monitoring Program  
Stakeholder Kickoff Meeting  
September 30, 2008

# Anything is Possible

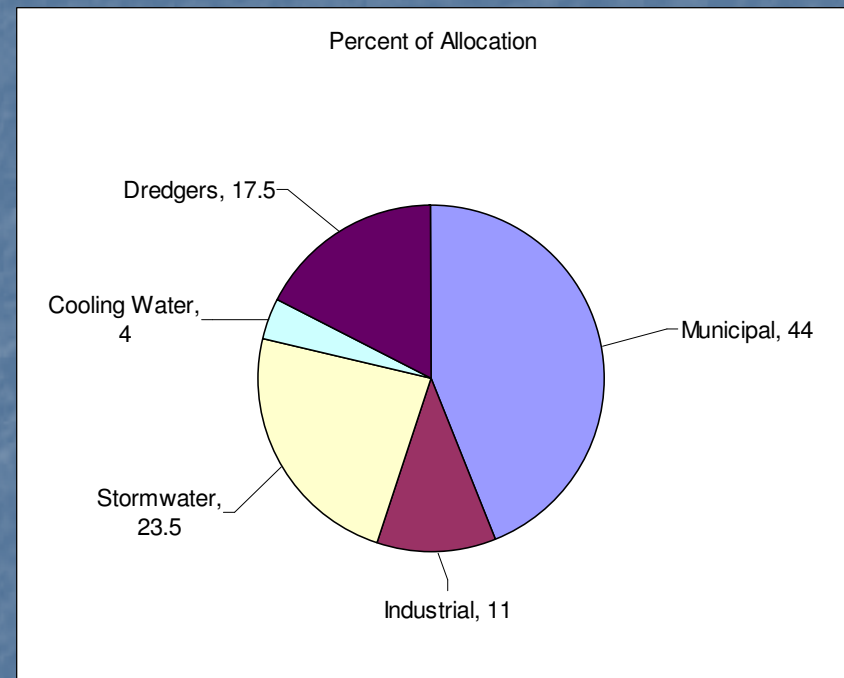


# This is Not the First

- Other successful regional monitoring programs exist
- Can be sources of insight and cautionary lessons
- Multiple examples of how the Elements can be implemented
  - RMP San Francisco Bay
  - Southern California Bight Program
  - Interagency Ecological Program (IEP)
  - LA & San Gabriel Rivers watershed programs
  - Lake Tahoe Regional Monitoring Program

# RMP San Francisco Bay

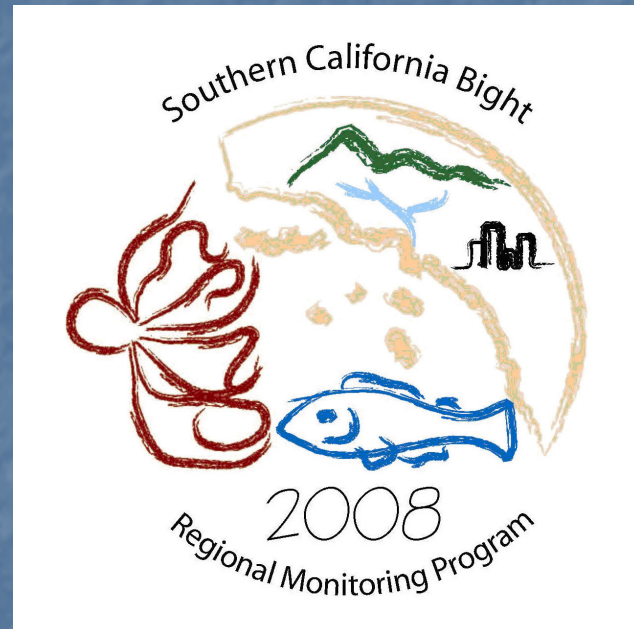
- Initiated with 13267 letter
- Funding based on formula & loads
- 1<sup>st</sup> year cost neutral
- Clear governance structure
- Initial focus on toxics, then adapted and expanded over time
- Results used in management, esp. TMDLs





# S Cal Bight Program

- Motivated by earlier NRC study
- Both permit-mandated and voluntary partners
- Funded by compliance monitoring offsets and partner contributions
- Partners active in planning, implementation, reporting
- Initial focus on POTWs, then expanded over time
- Results used in compliance and broader regional assessment



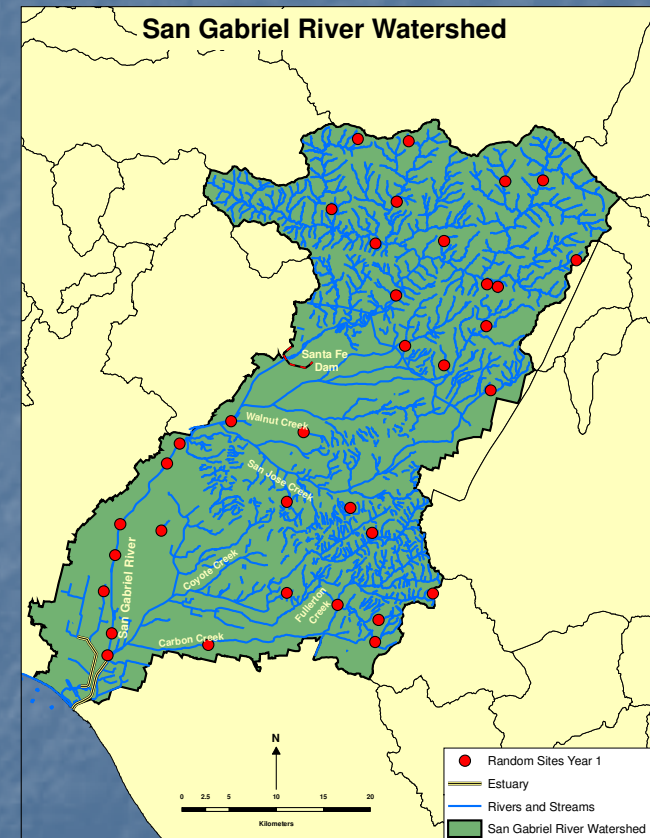
# Interagency Ecological Program

- Established by water rights decision in 1971
- Formal but flexible governance structure
- Coordinates efforts of several partners
- Focus on impacts of water withdrawals
- Unique, long-term datasets



# LA & SG Watershed Programs

- Mandated by permit conditions
- Funded by permanent compliance offsets
- Focus on specific questions at regional scale
- Directed by stakeholder workgroup
- Managed by independent NGO





# Lake Tahoe RMP

- Prompted by Regional Board's pending TMDL
- Inform regional trading program, improve models, track performance
- Planning conducted by stakeholder workgroup
- Funding from federal grants

